

# WESGROUP EQUIPMENT

A FAMILY OF COMPANIES



OUR PURPOSE: TO KEEP YOU UP AND RUNNING



# TRIED AND TRUE EQUIPMENT EXPERTISE



Wesgroup Equipment is a family of companies that has been selling, renting, and fixing equipment for over 100 years. Our dealer network consists of Westerra Equipment, Williams Machinery, Vermeer British Columbia, and Williams JCB. With dealerships across Western Canada, we keep your business up and running with fast, reliable, and dependable service.

We offer a wide range of equipment for every stage of construction, forestry, agriculture, landscaping, and logistics. Specifically, we manage a portfolio of premium brands including Bobcat, JCB, DEVELON, Vermeer, Linde, Konecranes, Terberg, and more.

As equipment experts, we also provide in-person training on how to operate machinery safely and effectively for our customers.





## At Wesgroup Equipment we've got G.R.I.T.

G.R.I.T. is how we deliver consistent, exceptional customer service.

**G:** Great range and selection of products and services

**R:** Relationship with our customers

**I:** Positive Impact to your bottom line

**T:** Time is money so uptime is critical to your success!

Our goal is to keep our customers up and running, and to do that we focus on all aspects of their equipment needs from purchase to maintenance and operator training.



## Our goal: zero harm.

Wesgroup Equipment and our family of companies are committed to providing world class service and equipment to our valued customers in a manner that ensures a safe and healthy work environment for our team members, vendors, contractors, and customers.



# OUR EQUIPMENT BRANDS



**BOBCAT** is the leading manufacturer of compact equipment - skid-steer loaders, compact track loaders, compact excavators, telehandlers, UTVs, and the largest range of attachments in the industry.



**DEVELON** is an industry leader in heavy construction equipment. DEVELON supplies heavy equipment for any job size with articulated dump trucks, excavators, dozers, wheel loaders, log loaders, and heavy equipment attachments.



**JCB** is one of the three largest brands in heavy machinery and construction equipment. From excavators, skid steer loaders, wheel loaders, telehandlers, backhoe loaders and more, JCB has a diverse selection of premium machinery to suit your job.



**VERMEER** is ideal for industries including tree care, utility installation, and environmental equipment. We offer a large range of industrial equipment such as brush chippers, stump cutters, mini skid-steers, directional drills, trenchers, grinders, trommel screens, and vacuum excavators.

Through our dealer network, we offer a wide range of premium brands in compact and heavy construction, environmental and material handling equipment.



**LINDE** Material Handling ranks among the world's foremost makers of forklift trucks and warehouse handling equipment and offers a great variety of internal combustion and electric equipment.



**KONECRANES** is a world leader in electrification of heavy duty material handling equipment. They manufacture overhead and port cranes as well as container handling equipment.

**AMMANN** is the world leading supplier of compaction machines including rammers, vibratory plates, tandem rollers, walk behind rollers, and pneumatic tyred rollers.

**BAUMANN** Sideloader Forklifts are a great alternative to the traditional forklifts. They are ideal for handling long loads and ensuring safety on the worksite. Baumann offers great options for electric machinery as well.

**CLARK** lift trucks are one of the most well-known forklift manufacturers in the world. Known for being tough and dependable, Clark forklifts are built to last.

**TERBERG** specializes in building terminals, yard tractors, and related vehicles used in ports, distribution centres, industry, road/rail, and airports. It is a big player in electric innovation.

# WORKING WITH US

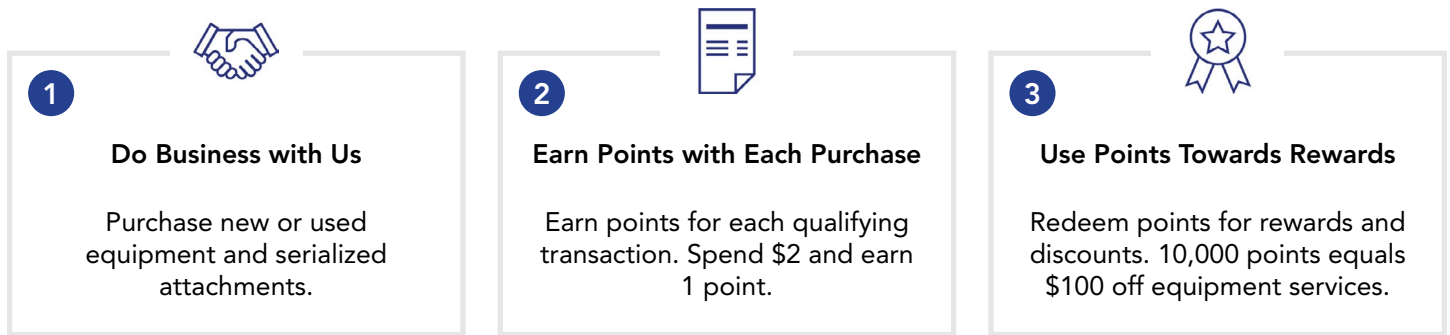
In addition to getting exceptional customer service, when you work with our network of equipment dealerships, you can benefit from our exclusive programs.

## G.R.I.T. Advantage

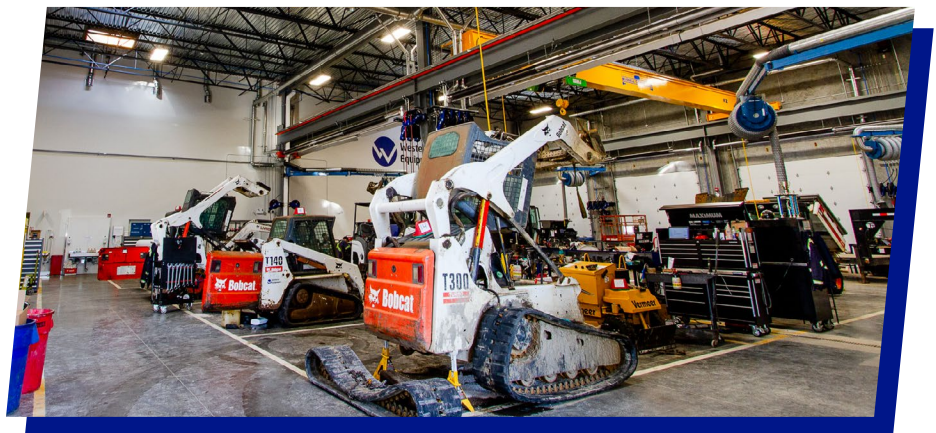
Do business with us and earn points through our G.R.I.T. Advantage customer loyalty program. Points are earned by purchasing new or used equipment and serialized attachments with our dealerships and can be used against service transactions.



### How it works:



**WE SERVICE ALL MAKES AND MODELS**



## Increased Electric Equipment Offerings

We aim to help our customers adopt electric equipment to lower emissions, lower operational and maintenance costs, and overall, showcase the potential to make the work environment safer for their teams. Therefore, we carry a wide range of electric equipment including forklifts, shunt trucks, trommel screens, compact loaders, compact excavators, dumpers, and grinders. We continue working with our OEMs to offer additional equipment as they become available.



## 10 Trees Planted

For every piece of equipment purchased with our network of equipment dealerships, we plant ten trees in British Columbia. To execute this, we partnered with One Tree Planted to commit to reforestation and continued sustainability. Alongside our electric equipment focus, this initiative will help us align with the sustainability efforts of our customers.



# INDUSTRIES

We want to help you do your job better, faster, and more cost-effectively. That's why we provide quality equipment with exceptional support. Across our family of companies, you'll find what you need no matter your industry. You'll get (1) innovative, powerful, and durable machines, (2) timely and comprehensive service and support, and (3) a dedicated and knowledgeable team to serve you.

## Construction

We carry a wide range of construction equipment products to support all stages of construction including:

- Ditches and culverts
- Asphalt paving
- Excavation and fill
- Portable power and lighting
- Landscaping
- Foundations, embankments, and roadways

Whether you're working in infrastructure, industrial, institutional, or residential, we have the right construction equipment for you.



## Forestry

We've got a great range of high performing premium forestry equipment that delivers effective and efficient results all day long.

- Roadbuilding
- Harvesting
- Log loading
- Managing wood waste
- Material handling

Our forestry equipment products are durable, dependable, and operator friendly, providing a well-balanced mix of enhanced technology, operator comfort, and performance. Most importantly, we keep your productivity up and costs down.



## Landscaping

No matter the application, our range of landscaping equipment will suit your needs.

- Skid steers
- Brush chippers
- Stump cutters
- Trenchers
- Compact excavators



## Agriculture

Make life easier with a variety of labour-saving agricultural equipment.

- Skid steers
- UTVs
- Track loaders
- Forklifts
- Telehandlers
- Compact articulated loaders

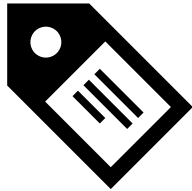
## Logistics

From container handling equipment, forklifts, and pallet jacks, we are here to help.

- Empty and laden container handling
- Industrial
- Distribution
- Manufacturing
- Warehousing
- High density storage

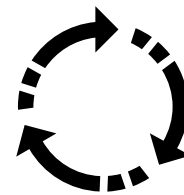
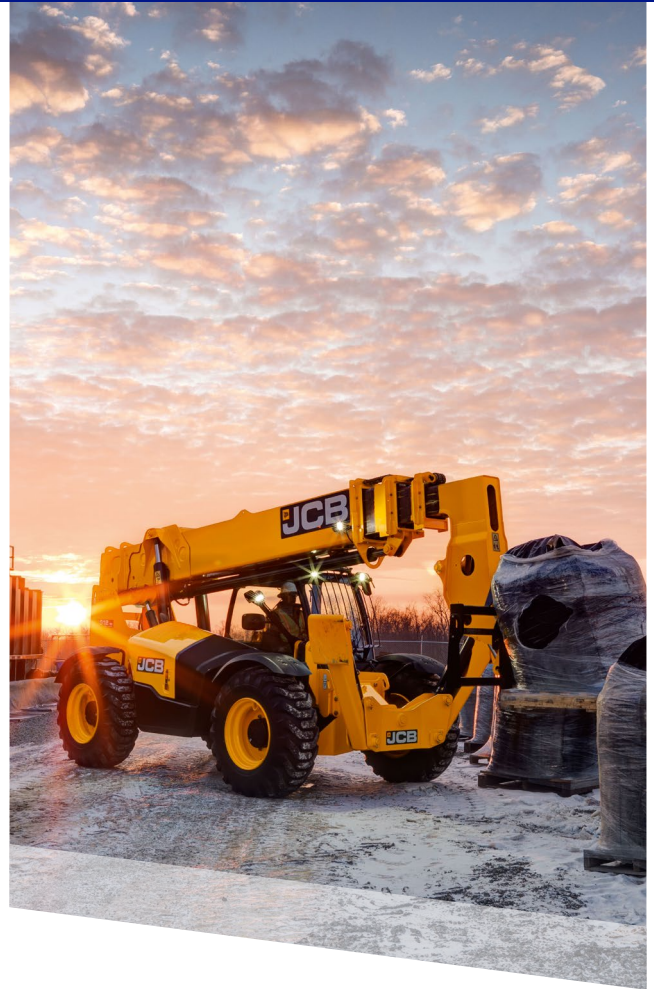


# EQUIPMENT OFFERINGS



## New Equipment

Westerra Equipment and Williams Machinery offer a diverse range of equipment brands including Bobcat, JCB, DEVELON, Vermeer, Linde, Konecranes, Terberg, and more.



## Used Equipment

We have a large inventory available of quality pre-owned equipment including both economy and premium forklift and construction equipment brands. All our used equipment has been serviced by our expert technicians.

## Rental Equipment

WE Rent offers a wide range of compact construction, material handling and heavy equipment rentals. Maximize worksite uptime and control business expenses when you rent from our inventory of forklifts, excavators, compact loaders, lift equipment, machinery attachments, and more.

Visit [werentequip.com](http://werentequip.com) to view our inventory.



### Why rent with us:



**READY WHEN YOU NEED IT**



**TRY BEFORE YOU BUY**



**NO TO LOW COMMITMENT**

Renting equipment can minimize your downtime and reduce maintenance costs while helping control expenses and risk in your business. Of course, rental equipment also ensures that you get the right equipment or attachment solution right away for the job at hand.



## Featured Brands



**DEVELON**



*Linde*



**Genie**

# SERVICE

Unscheduled downtime is the single biggest threat to most operations. Our maintenance programs will ensure that planned servicing and monitoring is taken care of for any equipment within the Wesgroup family of dealerships. Let's work together on a customized program that will keep your workplace safe and your operations running at peak levels.



## FAST RESPONSE

Our service team is available 24/7 and we can provide emergency same day response service.



## TECHNICAL EXCELLENCE

Our highly skilled, factory-trained, and certified technicians are engaged in ongoing training.



## MINIMAL ENVIRONMENTAL IMPACT

Our late-model service vehicles are regularly maintained to run efficiently.



# PARTS

We offer a great range of premium OEM and aftermarket replacement parts and attachments to keep your equipment working at its peak performance. We stock thousands of new and used replacement parts in our inventory including fast moving items across Western Canada. Whether you're working with construction, compaction, excavation, heavy, or material handling equipment, our team will get the right equipment part solution for you. We carry major brands including Bobcat, JCB, DEVELON, Vermeer, Ammann, Linde, Konecranes, and Terberg.



Our in-class equipment operator training courses are designed to provide classroom theory-based learning and increased hands-on learning to ensure trainees fully comprehend the equipment, application, and training requirements of the course in a realistic setting. We offer various safety and equipment training courses at our training centers located throughout Western Canada. For groups, we also offer on-site training at a location of your choice.

## In-class Equipment Operator & Safety Training Courses

In-class operator safety training courses are available for forklifts and compact construction equipment throughout Western Canada. Equipment operator training certification and re-certification courses are offered for skid steer loaders, mini excavators, class 1-5 forklift, telehandlers, aerial lift equipment, and fall protection. We also offer on-site and group training programs by request.



## Online Safety Compliance & Safety Training Courses

We offer over 1000 online courses covering topics in General Safety, Equipment Operation, Hazard Awareness, Electricity, Professional Drivers, and Soft Skills that are ideal for people working in various industries including construction, warehousing, logistics, oil and gas, transportation, agriculture and more.

# JOIN OUR AWARD WINNING TEAM



## We are a team of people-focused problem-solvers.

In our company, individual effort makes an immediate difference and collectively has a massive impact on our business and our customers' needs. Our leadership teams practice a "Yes and..." approach when discussing the future of our business, which makes it a very welcoming environment for new ideas and questioning the status quo. Despite being in the heavy industrial market where traditional practices are typically followed and change is uncommon, Wesgroup Equipment is eager to adopt innovations to constantly improve our employee and customer experiences.



## Our values

**BUILD  
TRUST**

**SUPPORT  
COMMUNITY**

**BE CUSTOMER  
FOCUSED**

**BE A TEAM  
PLAYER**

**DELIVER  
RESULTS**

## Our commitment to community

Our W.E. Care Committee is led by employees volunteering their time to run community and charitable initiatives company wide. Some key initiatives include:

- Pink Shirt Day - Anti-Bullying
- Jeans Day - BC Children's Hospital
- Coats for Kids
- Food Bank
- Building for Kids Golf Tournament - BC Children's Hospital
- Adopt a Family - Local Family Support Organizations
- Pink Forklift Campaign - Canadian Breast Cancer Foundation
- Commitment to reforestation with 10 Trees Planted program



# WESGROUP

## EQUIPMENT

A FAMILY OF COMPANIES



### WILLIAMS MACHINERY

1.888.712.4748 | [www.WILLIAMSMACHINERY.com](http://www.WILLIAMSMACHINERY.com)

#### Kelowna

174 Adams Rd  
BC V1X 7R2

#### Surrey

10240 Grace Rd  
BC V3V 3V6

#### Prince George

102-880 Great St.  
BC V2N 5R7

#### Terrace

5506 Highway 16 West  
BC V8G 0C6

### WESTERRA EQUIPMENT

1.888.713.4748 | [www.WESTERRAEQUIPMENT.com](http://www.WESTERRAEQUIPMENT.com)

#### Abbotsford

3349 Mt. Lehman Rd  
BC V2T 5M1

#### Nanaimo

2140 Schoolhouse Rd  
BC V9X 1T4

#### Kamloops

585 Cree Dr  
BC V2H 1H9

#### Victoria

827 Station Ave  
BC V9B 2S2